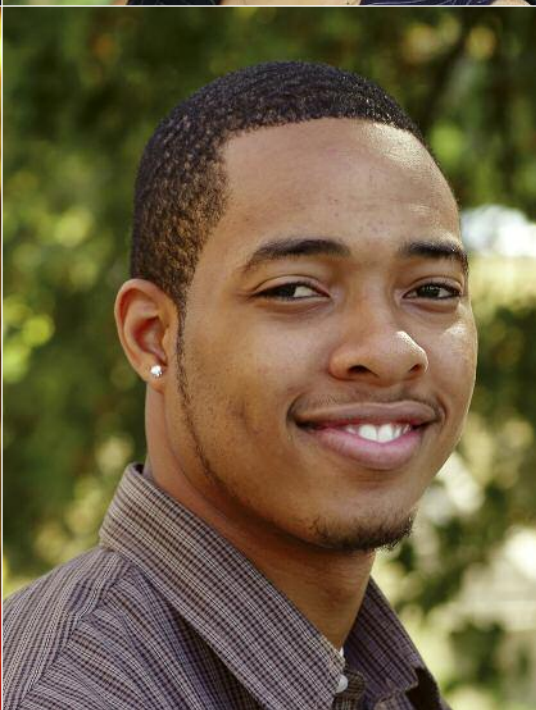




PARK UNIVERSITY
ONE UNIVERSITY. YOUR WORLD.SM



Access takes on many meanings at Park University. First, you gain access to academic excellence. We train you to think critically, communicate effectively and engage in lifelong learning. You also enjoy amazing access to experienced faculty who can show you the way. We support you by keeping classes small and tailoring instruction to your needs and interests. Finally, you gain access to real-world experience. On a campus this size, you'll be asked to contribute your unique insights and point of view from the start. Student activities and cocurricular learning provide wider access to opportunities, advancing you on the road to success.

"As a student in the education department, I can honestly say we have the most fantastic teachers here. I just can't say enough about them; they are my role models and my inspiration. They are what I want to be when I'm older. They're just awesome."

MARY DIVILBISS
ELEMENTARY EDUCATION
LIBERTY, MO

PARK UNIVERSITY has given generations of students from diverse backgrounds access to an affordable, private university education.

At Park, Faculty Put You First

Individualized instruction and a faculty dedicated to teaching stand out among Park's many benefits.

We make your development, as a student and a person, our first priority. Along with new knowledge and confidence, you will develop

an abiding sense of purpose and the highest ethical standards.

Park's well-balanced liberal arts curriculum trains you to see patterns across subject matter; to combine courses in unexpected and novel ways; and to merge classroom and extracurricular experiences.

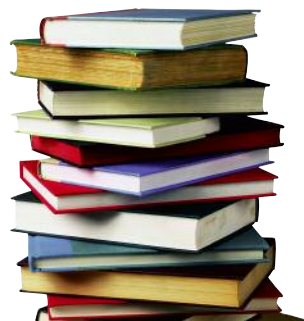
Along the way, you will benefit from new teaching methods and the latest classroom technology. You will explore cultures and address difficult global issues. You will emerge as a leader.

Firsthand History

Park history majors have attended the Phi Alpha Theta Biennial Conference and the American Historical Association Annual Meeting in Philadelphia, networking with peers, exploring history graduate programs, and touring historical sites.

Honors Program

Park's challenging Degree with Honors Program provides special classes, mentoring and opportunities for independent research. Park honors students attend and make presentations at the Great Plains Honors Council Regional meeting.



A MAJOR OF YOUR MAKING

ARTS OR SCIENCE. BUSINESS OR EDUCATION. CHOOSE AN ACADEMIC PROGRAM TO SUIT YOUR LIFE GOALS AND INTERESTS.

- | | |
|---------------------------|--------------------------|
| Accounting | Sociology |
| Athletic Training | Spanish |
| Biology | Theatre |
| Business Administration | Minor Areas |
| Business Economics | Accounting |
| Chemistry | Biology |
| Communication Arts | Business Administration |
| Organizational | Chemistry |
| Communications | Communication Arts |
| Criminal Justice | Organizational |
| Administration | Communications |
| Early Childhood Education | Criminal Justice |
| and Leadership | Administration |
| Early Childhood Education | Economics |
| -Teaching Young Children | English |
| Elementary Education | Fine and Performing Arts |
| Middle School Education | Fine Art |
| Secondary Education | Geographical Information |
| Education Studies | Systems |
| -International Educator | Geography |
| English | Geoscience |
| Fine Art | Global Studies |
| Geography | Global Sustainability |
| Graphic Design | Graphic Design |
| History | History |
| Information and | Information and |
| Computer Science | Computer Science |
| Interior Design | Legal Studies |
| Legal Studies | Mathematics |
| Liberal Studies | Music |
| Mathematics | Peace Studies |
| Music | Philosophy and Religion |
| Natural Science | Political Science |
| Political Science | Psychology |
| Psychology | Sociology |
| Social Psychology | Spanish |
| Social Studies | Theatre |
| Social Work (BSW) | |

“The classroom discussions at Park, about something like civil rights and civil liberties, are really priceless. For example, I asked several students from Kenya to talk about life in a very restricted society. My American students were initially shocked to hear the things that are going on, but also very interested.”

RON BRECKE, Ph.D.
PROFESSOR OF POLITICAL SCIENCE

Whether you arrive from one of Kansas City’s suburbs or the central highlands of Kenya, the first year of college marks an exciting start to the rest of your life. Park attracts a diverse and global student population. You will graduate with a degree and a global perspective, a world of contacts, and a deeper understanding of international relations and markets. What’s life-changing about attending Park University is more than simply being among an interesting group of people and cultures. It’s about joining together; adding your ideas and power to that of others; combining individual strengths to pursue collective goals and achieve a higher good.

Global engagement has been a hallmark of PARK UNIVERSITY throughout its proud, 134-year history. Today, PARK is a center for excellence and innovation in global education.

Come to the U.S.

The Office of International Student Services assists more than 700 students from 105 countries each year with admissions, financial aid, travel, insurance and housing issues. We can even connect you with a host

Friendship Family in the community to help ease your transition to study in the United States.

Go Abroad

Park offers a variety of study abroad programs to its diverse student body on all 42 campuses. Park offers study abroad in Denmark, Greece and Mexico through direct partnerships with institutions in those countries and other countries through the College Consortium for International Studies (CCIS). Student exchange options also exist in Taiwan and Russia.

Engage ... Across Campus

Park students learn to think, act and communicate with a global awareness and perspective, whether it’s through extracurricular activity such as Model UN or a friendly game of soccer.

Engage ... Everywhere You Go

The Global Future program offers a 360° view of the global economy, contact with area corporate leaders, and access to international business leadership skills and job opportunities.

The International Classroom Partnership encourages Park’s international students to make presentations about their home countries to local elementary schools.

The International Center for Civic Engagement advances the University’s global mission, connects international efforts and generates innovative educational opportunities for students and all of tomorrow’s global citizens.

Park University’s International Center for Civic Engagement and its People to People International chapter has recently started a new endeavor; The International Pen Pal Program. Read more at: www.icce.typepad.com



"My first week on campus, I went to lunch with a friend and by the end of the meal, I knew people from France, Brazil and Africa. I walked to class thinking, 'Wow, this just doesn't happen every day. In fact, this has never happened before.' I loved it."

MEGAN SMITH
COMMUNICATION ARTS
INDEPENDENCE, MO

The transition to a new college, whether it begins as a freshman or transfer student, can be exhilarating and a bit intimidating. At Park, we know that engaged students become successful and happy scholars. We invite you to get involved and to draw support and encouragement from your new world of friends. In the classroom, you will learn to function in groups, share resources and gain knowledge. Those same skills apply to cocurricular settings. Sharpen your leadership skills. Give to others through community service. Above all, grow friendships and create memories that will last a lifetime.

Regardless of the career path you take, your future will unfold in an increasingly interdependent world. The friends you make at PARK will serve as a template for a life well lived.

On the Go!

A day without something to do at Park is definitely the exception. From guest speakers to bowling, from movies on the lawn to the annual Spring Fling, kicking back and having fun is your reward for the many hours of hard work.

Park offers a student organization for every interest. From the Drama Club to Model United Nations, Student Government to Rotaract (a service-minded student chapter of Rotary International), there always is something new to try—whether you volunteer in the community or contribute to a student publication.

Team Power

Many Park students played sports in high school but now want to focus on academics. For those who want the thrill of competition without the commitment of a varsity program, Park offers a range of intramural sports.

Home Away from Home

Park considers residential living an integral part of the educational experience. We create a safe, welcoming experience. If you are a full-time, single, undergraduate student under the age of 21, you are required to live in a residence hall, *unless*: you are living with parent(s), legal guardian(s), or have dependent children; or have completed 58 or more credit hours.

Residence halls offer plenty of amenities such as 24-hour computer lab, TV lounge, fitness center, study areas, fireplace, kitchen, Ping-Pong and pool table, vending machines and laundry facilities.



CLUBS AND ORGANIZATIONS

ALPHA CHI
ALPHA KAPPA DELTA
ALPHA PHI OMEGA
AMERICAN ASSOCIATION FOR UNIVERSITY WOMEN (AAUW)
AMERICAN INSTITUTE OF GRAPHIC ARTS
AMERICAN MARKETING ASSOCIATION
ASSOCIATION FOR COMPUTING MACHINERY (ACM)
ASSOCIATION FOR SUPERVISION AND CURRICULUM DEVELOPMENT (ASCD)
BALLROOM DANCING CLUB
BETA BETA BETA
BIOLOGY CLUB
CAMPUS ACTIVITIES BOARD (CAB)
CAMPUS CRUSADE FOR CHRIST
CAPTAIN KANGAROO'S PIRATES
C.H.E.M. CLUB
COMMUNICATION CONNECTION
DANCING PIRATES
DEBATE CLUB
FLYING DISC CLUB
GEO CLUB
GLOBAL FUTURES CLUB
INTERNATIONAL INTERIOR DESIGN ASSOCIATION (IIDA)
LAMBDA ALPHA EPSILON/CRIMINAL JUSTICE CLUB
MILELE KENYAN CLUB
MODEL ORGANIZATION OF THE AMERICAN STATES CLUB (MOAS)
MODEL UNITED NATIONS
PARK STUDENT GOVERNMENT ASSOCIATION (PSGA)
PARK UNIVERSITY COLLEGE REPUBLICANS
PARK UNIVERSITY GAY/STRAIGHT ALLIANCE
PARK UNIVERSITY STUDENT ATHLETIC ADVISORY COMMITTEE (PUSAAC)
PARK UNIVERSITY STUDENT ATHLETIC TRAINERS' ASSOCIATION (PUSATA)
PAX CHRISTI
PEOPLE TO PEOPLE INTERNATIONAL
PHI ALPHA THETA/ZETA OMICRON
PI LAMBDA THETA
PI SIGMA ALPHA (ALPHA DELTA UPSILON CHAPTER)
PIRATE RADIO CLUB (KGSP 90.3 FM)
POLITICAL SCIENCE CLUB
PSI CHI
PSYCHOLOGY CLUB
PUBLIC RELATIONS STUDENT SOCIETY OF AMERICA
RESIDENCE HALL COUNCIL (RHC)
ROTARACT
SIGMA ALPHA PI
SIGMA TAU DELTA-THE ENGLISH CLUB
SOCIOLOGY CLUB
SOCIAL PSYCHOLOGY CLUB
SOCIAL WORK CLUB
SPANISH CLUB
STUDENT AMBASSADORS
STUDENT NATIONAL EDUCATION ASSOCIATION (SNEA)
STUDENT NURSES' ASSOCIATION (SNA)
THEATRE CLUB
WORLD STUDENT UNION (WSU)

From our perch high above the Missouri River, you can see the rooftops of Parkville, a classic American small town. Look in another direction, toward downtown Kansas City, and you sense the excitement of a thriving metropolis of two million people. In other words, Park offers the safety and comfort of our Parkville Campus, while still keeping you connected to wider worlds of opportunity and activity. Step away from campus with just a short walk to Parkville or a bike ride through English Landing Park. Or venture into downtown Kansas City for that prized internship or a day of serious shopping at the Country Club Plaza.



It's not just the school, but everything surrounding it that will brighten your college experience. PARK enjoys a prized location, quiet enough for serious work, but connected to worlds of adventure.

"I like the separateness of the campus, and yet I also like being close to the big city. I knew that getting a job would be a priority, during school and certainly after graduation. Kansas City provides lots of opportunities."

RYAN JOHNSTON, ACCOUNTING, KANSAS CITY, MO

Nature Next Door

The Parkville Nature Sanctuary offers 115 acres of woods, wetlands and a waterfall...the perfect escape for the busy mind.

Snacks and Social Hour

Park students organize a "grub crawl" through Parkville, showcasing the restaurants in town and introducing new students to their town neighbors. At each stop, chefs and owners give a presentation about their business or type of food including a Japanese cooking demonstration and an introduction to Argentinean cuisine. The night is capped off with a round of mini-golf and ice cream.

Kansas City, Here You Come

Kansas City, founded as a staging post and resupply depot for America's great frontier, stands as one of the nation's most ambitious and authentic cities. Downtown offers signature jazz music, finger-licking barbecue, public spaces and the flair of vintage Art Deco and Mediterranean-style architecture. This sprawling metropolis is both edgy and serene, a major city that retains its small-town charms and grace.

Old World and New

The 150-year-old River Market neighborhood is home to an eclectic mix of restaurants and merchants selling accessories and specialty foods from around the world.

KANSAS CITY ATTRACTIONS...

SPORTS AND EVENTS Royals (MLB), Chiefs (NFL), Kansas Speedway, T-Bones, The Woodlands, American Royal Horseshow and Rodeo, NASCAR & Indy Car Racing

HISTORY AND ATTRACTIONS Fort Osage, Fort Leavenworth, Arabia Steamboat, Negro Leagues Baseball Museum, Truman Presidential Museum & Library, Harry S. Truman House, Airline History Museum, National Frontier Trails Museum, 1850s Shawnee Town, Shawnee Indian Mission, Alexander Major's Historic House, Hallmark Visitors Center, Mormon Visitors Center, National Agricultural Center and Hall of Fame, Thomas Hart Benton House, Jesse James Farm and Museum, Jesse James Bank Museum

MUSIC AND ARTS Jazz, Broadway Musicals, American Jazz Museum, Nelson-Atkins Museum of Art, Kemper Museum of Contemporary Art, Gem Theater, Starlight Theatre

FUN Worlds of Fun/Oceans of Fun, Kansas City Zoo, Harley-Davidson Tours, Science City at Union Station, Powell Botanical Gardens

SHOPPING Zona Rosa, Country Club Plaza, Crown Center